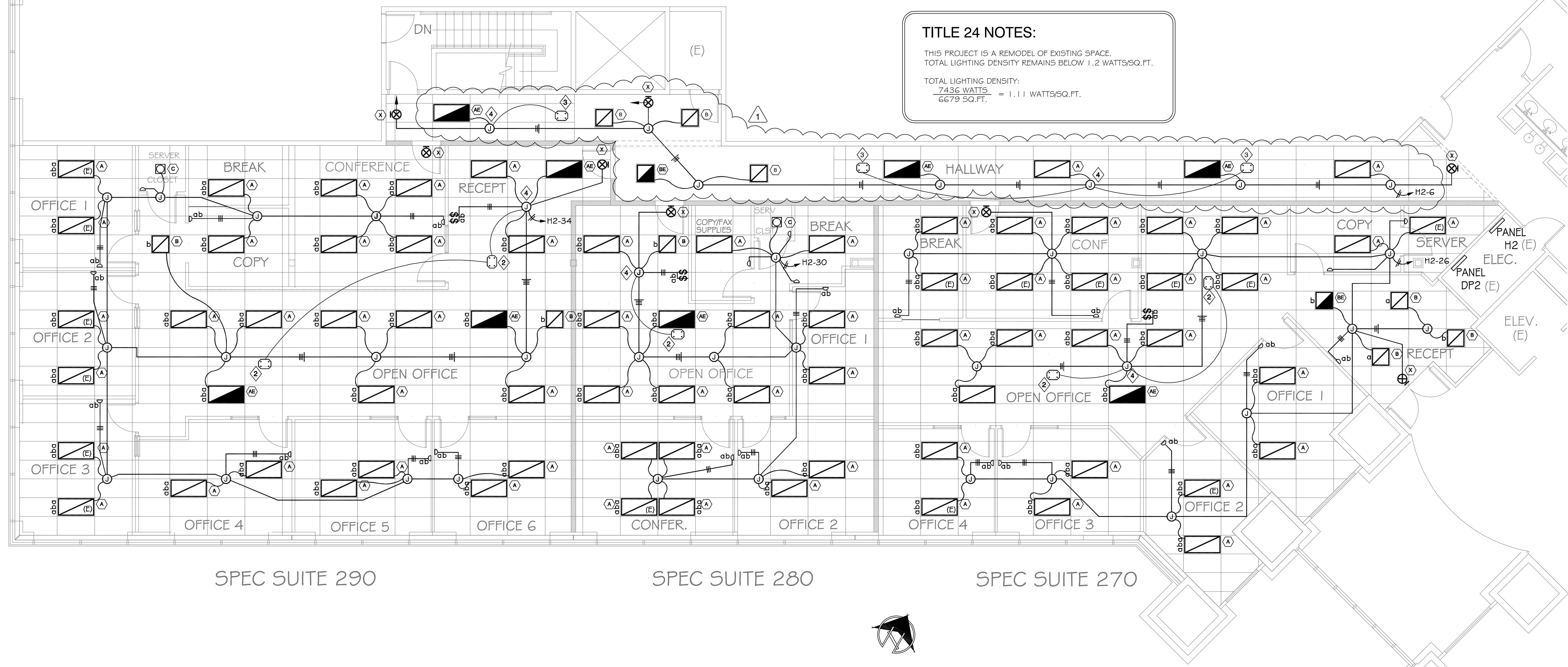


REVISIONS	BY
4/18/07 FIRE CLG	BES

TITLE 24 NOTES:
 THIS PROJECT IS A REMODEL OF EXISTING SPACE.
 TOTAL LIGHTING DENSITY REMAINS BELOW 1.2 WATTS/SQ.FT.
 TOTAL LIGHTING DENSITY:
 7436 WATTS / 6679 SQ.FT. = 1.11 WATTS/SQ.FT.



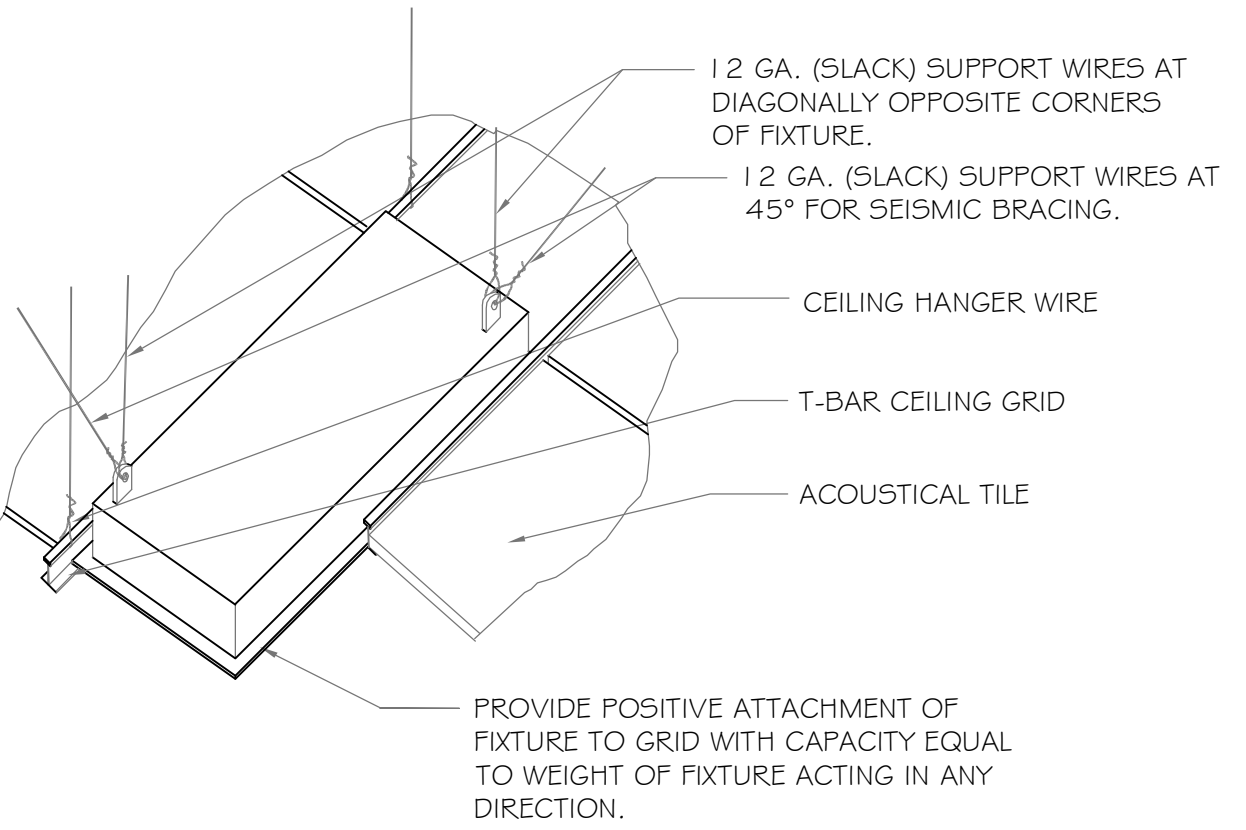
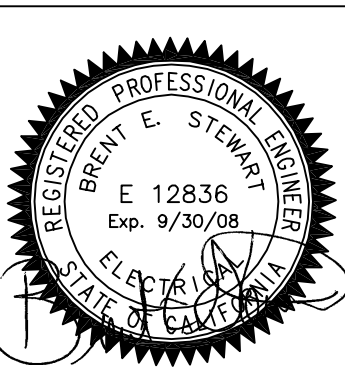
Brent Stewart, P.E.
 Consulting Engineer
 PO Box 3116, Diamond Springs, CA 95619
 530-621-0300 FAX 530-626-0959

INVESTMENT PLAZA BLDG B
 1107 INVESTMENT BLVD.
 EL DORADO HILLS, CA.

LIGHTING LAYOUT

DRAWN: BES
 CHECKED: BES
 DATE: 1/12/07
 SCALE: AS NOTED
 JOB NO.: 2702

SHEET
E3



LIGHTING FIXTURE MOUNTING DETAIL
 SCALE: NONE

FIXTURE SCHEDULE							
CALLOUT	DESCRIPTION	MANUFACTURER # PART #	VOLTS	LAMPS	WATTS	MOUNTING	REMARKS
(A)	2' x 4', 3 LAMP LAY-IN FLUOR. TROFFER w/PARABOLIC LENS & RETURN AIR	LITHONIA 2PM3N GA 3 32 18LD 277 GEB	277	(3) F32T8	86	LAY-IN GRID	RE-USE EXISTING FIXTURES
(AE)	2' x 4', 3 LAMP LAY-IN FLUOR. TROFFER w/PARABOLIC LENS, RETURN AIR & BATTERY PACK	LITHONIA 2PM3N GA 3 32 18LD 277 GEB LST11 EL	277	(3) F32T8	86	LAY-IN GRID	CONNECT BATTERY PACK TO UNSWITCHED CIRCUIT
(B)	2' x 2', 2 LAMP LAY-IN FLUOR. TROFFER w/PARABOLIC LENS & RETURN AIR	LITHONIA 2PM3N GA 2 U31 9LD 277 GEB	277	(2) U31T8	59	LAY-IN GRID	CONNECT BATTERY PACK TO UNSWITCHED CIRCUIT
(BE)	2' x 2', 2 LAMP LAY-IN FLUOR. TROFFER w/PARABOLIC LENS, RETURN AIR & BATTERY PACK	LITHONIA 2PM3N GA 2 U31 9LD 277 GEB EL	277	(2) U31T8	59	LAY-IN GRID	CONNECT BATTERY PACK TO UNSWITCHED CIRCUIT
(C)	FLUORESCENT DOWNLIGHT, OPEN REFLECTOR	LITHONIA AF 26TRT GAR 277	277	(1) 26TRT	26	RECESSED	RE-USE EXISTING FIXTURES
(X)	SINGLE FACE EDGE-LIT LED EXIT SIGN	LITHONIA EDG 1 G 120/277 EL N	277	LED	5	CEILING / WALL	CONNECT TO UNSWITCHED CIRCUIT

NOTES:

- ALL SWITCHES, RECEPTACLES AND COVERS TO BE WHITE OR OFFICE WHITE.
- CEILING-MOUNTED OCCUPANCY SENSOR, WATTSTOPPER WT-2200 OR EQUIV. DELAY: 10 MINUTES.
- CEILING-MOUNTED OCCUPANCY SENSOR, WATTSTOPPER WT-2250 OR EQUIV. DELAY: 10 MINUTES.
- POWER PACK, WATTSTOPPER B277E-P OR EQUIV.
- ALL LIGHTING FIXTURES SHALL BE POSITIVELY ATTACHED TO THE SUSPENDED CEILING SYSTEM PER UBC STANDARD 25-2, SEC. 25.213
- ALL LIGHTING FIXTURES INSTALLED IN ACOUSTICAL TILE OR LAY-IN PANEL CEILINGS SHALL BE SUPPORTED DIRECTLY FROM THE FIXTURE HOUSING TO THE STRUCTURE ABOVE WITH A MINIMUM OF TWO 1/2 GAUGE WIRES PER UBC STANDARD 25-2, SEC. 25.213

LIGHTING LAYOUT
 SCALE: 3/16" = 1'

COPYRIGHT 2007 BRENT STEWART, P.E.
 THESE PLANS ARE NOT TO BE REPRODUCED, CHANGED OR COPIED IN ANY FORM OR MANNER WHATSOEVER, NOR ARE THEY TO BE ASSIGNED TO ANY THIRD PARTY, WITHOUT FIRST OBTAINING THE EXPRESS WRITTEN PERMISSION AND CONSENT OF BRENT STEWART, P.E.
 THE CONTRACTOR AND/OR SUB-CONTRACTOR SHALL VERIFY ALL DIMENSIONS ON THE DRAWINGS AND SHALL BE RESPONSIBLE FOR THEIR ACCURACY; NOTIFY THE OWNER OF ANY DISCREPANCIES PRIOR TO STARTING WORK.