

WEGENER ENGINEERING GROUP
Since 1965

6402 Skyway
Paradise, CA 95969

Phone 530-877-4049 Fax 530-876-0585

Brent Stewart, P.E.
Consulting Engineer

PO Box 3116, Diamond Springs, CA 95619
530-621-0300 FAX 530-626-0959



NO.	ISSUES/REVISIONS	DATE
1	PLAN CHECK	4-3-08

FIRST BAPTIST CHURCH OF FAIR OAKS
4401 SAN JUAN AVE., FAIR OAKS, CA 95628

FAIR OAKS, SACRAMENTO COUNTY CALIFORNIA

PROJECT NO: 2705

DATE: DEC. 14, 2007

DRAWN BY: BES

CHECKED BY: BES

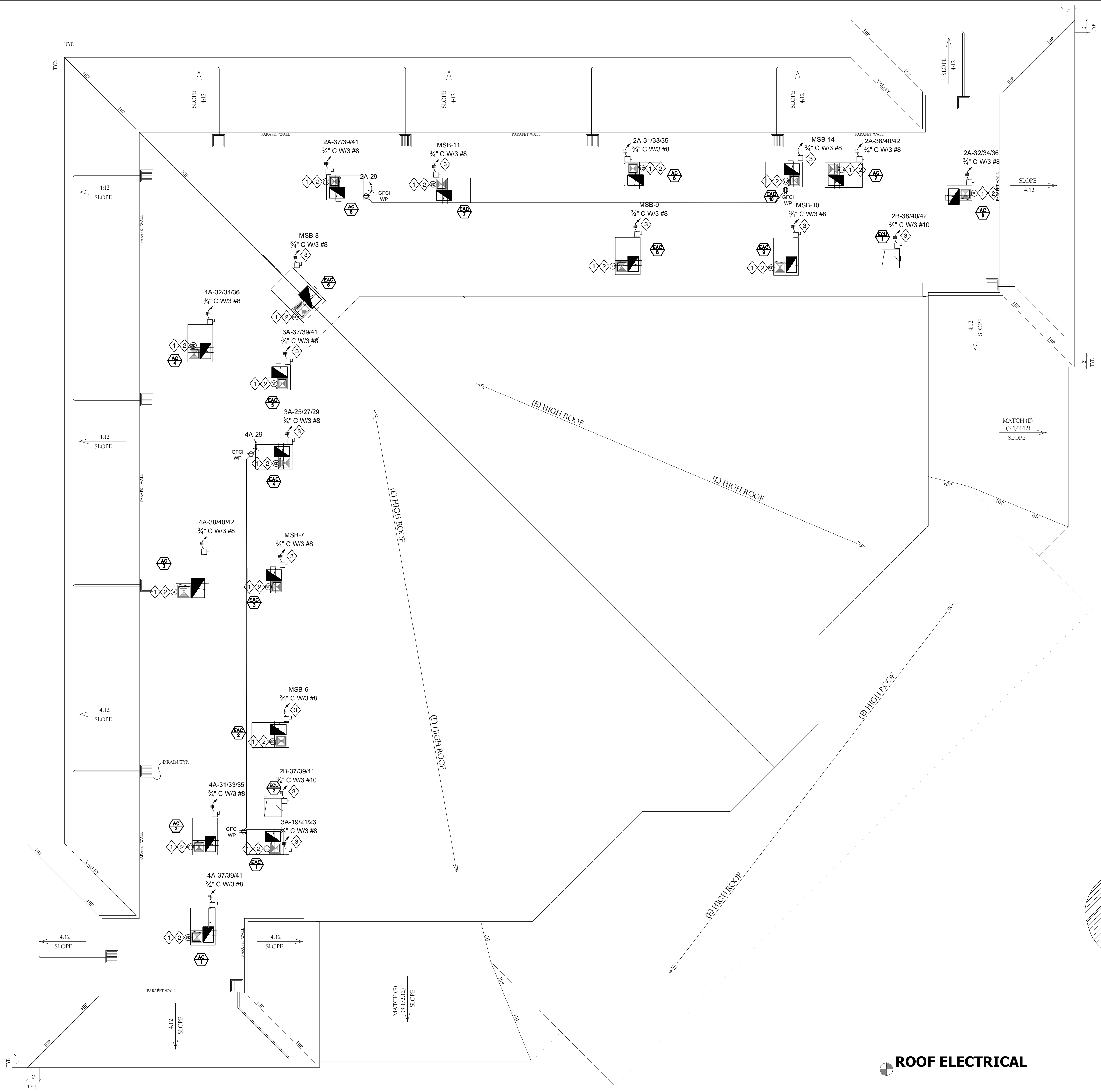
SCALE: 1/8" = 1'-0"

SHEET TITLE:

ROOF
ELECTRICAL

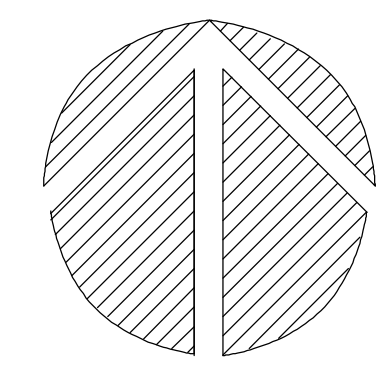
SHEET NO.

E4.1



SHEET NOTES:

- 1 SUPPLY DUCT SMOKE DETECTOR, AIR PRODUCTS & CONTROLS "RW" SERIES OR EQUIVALENT. HVAC CONTRACTOR TO CONNECT TO 24VAC THERMOSTAT CONTROL WIRING PER MANUFACTURER'S SPECIFICATIONS. PRIMARY ALARM CONTACT TO SHUT DOWN HVAC WHEN SMOKE IS DETECTED. FIRE ALARM CONTRACTOR TO WIRE SECONDARY ALARM AND TROUBLE CONTACTS INTO BUILDING FIRE ALARM SYSTEM.
- 2 REMOTE TEST/RESET STATION, LOCATED ON THE WALL OR CEILING DIRECTLY BELOW DUCT SMOKE DETECTOR. HVAC CONTRACTOR TO CONNECT TO SMOKE DETECTOR PER MANUFACTURER'S SPECIFICATIONS.
- 3 INTERCEPT AND EXTEND EXISTING FEEDERS FOR ROOFTOP UNIT. REPLACE EXISTING CIRCUIT BREAKER WITH "HACR" RATED BREAKER PER MOCP RATING SHOWN ON SHEET M-1. (ALTERNATE: USE A FUSED DISCONNECT WITH MOCP RATED FUSES AS SHOWN ON SHEET M-1). RE-LABEL BREAKER WITH NEW UNIT DESIGNATION.



NORTH

ROOF ELECTRICAL

SCALE: 1/8" = 1'-0"

All drawings and written material appearing herein constitute original and unpublished work of the Engineer and may not be duplicated, used or disclosed without consent of Engineer.

If this drawing is not 24"x36", then the drawing has been revised from its original size.

Noted scales must be adjusted. This line should be equal to one inch